



MODEL:604020C

W18xL12xH6M

INSTALLATION INSTRUCTIONS



Installation Instructions

Congratulations on your purchase of our instant shelter. This unit is a combination of excellent manufacturing and design. It is comprised of a rigid frame and a durable cover. For easy assembly, we have marked all the parts with codes, with proper installation, use and maintenance, your unit will provide many years of good and suitable service.

Tools Required

The following hand tool will be needed for proper installation of your new building:

- 12mm, 14mm, and 17mm open end wrenches
- 12mm, 14mm, 17mm sockets or box wrenches
- Large flat head screwdriver
- 2lb maul or sledgehammer
- 4ft level
- 14ft step ladder
- Stake and string for aligning base plates and frame

Assembly Procedure

1. Prepare location and place all unit boxes near location sight. Perform an inventory check before beginning, to be certain all components are available for installation.
2. Secure base plate flanges to base surface.
3. Assemble every group of the arch.
4. Begin frame assembly with front end arch, first interior arch, purlins, etc.
5. Add to assemble other groups of arches.
6. Install main cover over frame.
7. Install end cover over end panels.

Read all the detailed instructions and notices in the following assembly instructions!

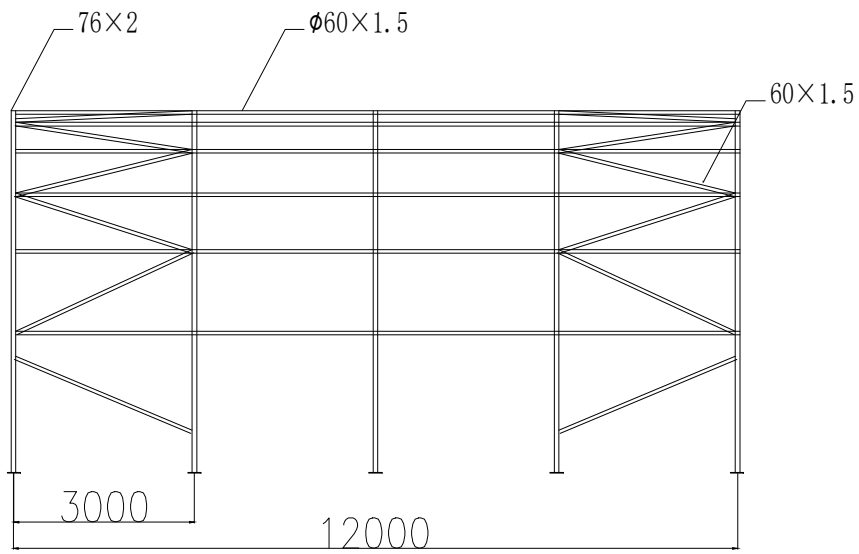
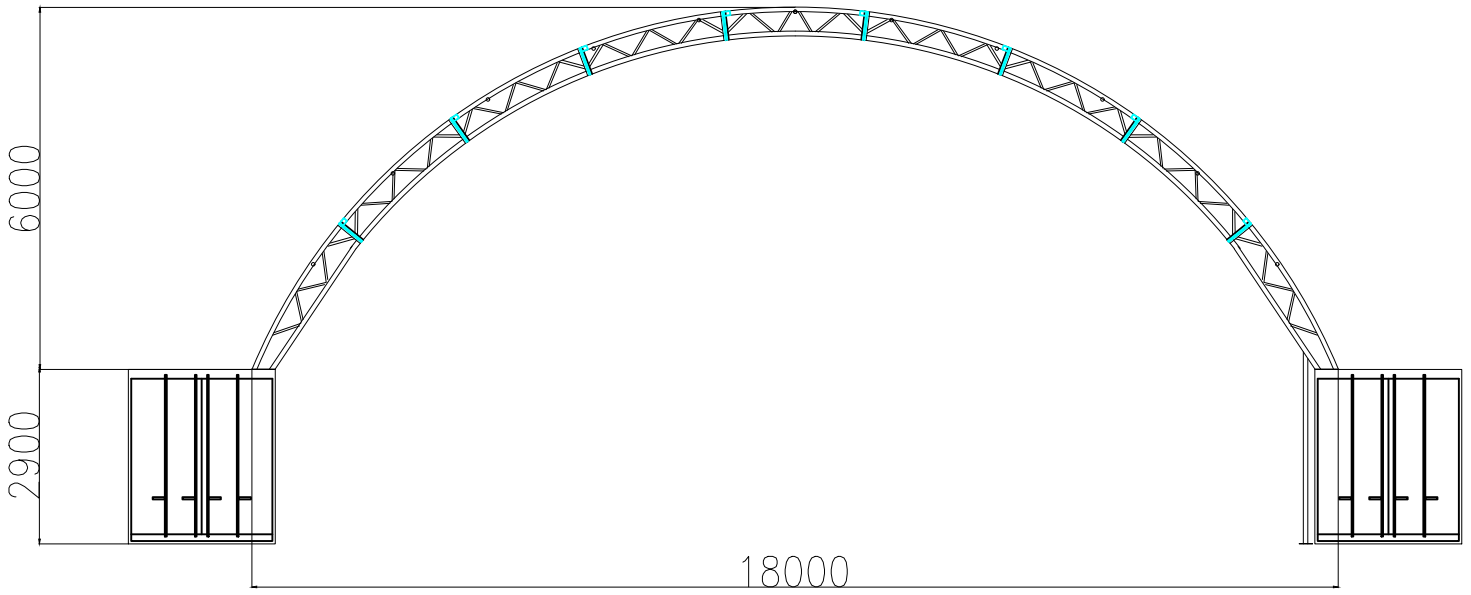


Maintenance and Care

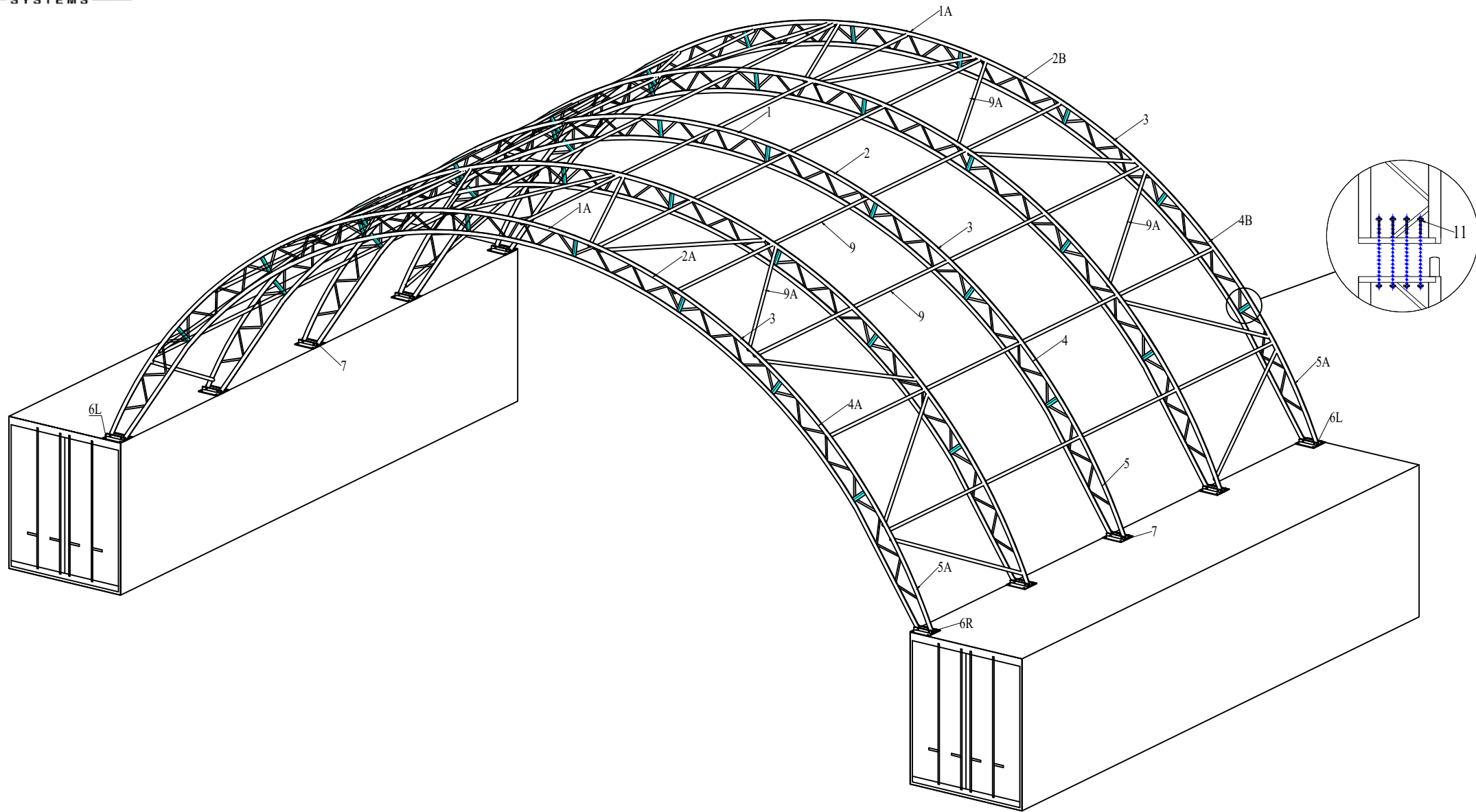
Annually or more often, the unit should be completely inspected internally and externally to make certain the unit remains properly installed and secured. Particular attention should be paid to:

- Hardware - check all carriage bolts and hardware connectors to be certain they are in place and tightened.
- Weather trends - The unit will strain against the base plate flange under windy conditions, pegs hardware, connection to frame members should be maintained tight and depth of pegs should be checked to be certain they remain deeply and firmly set.
- Snow Accumulation - All snow accumulation on the main cover should be removed as soon as possible. Tap the main cover from the inside with a broom or soft brush to clear cover.
- Main Cover Lacing - The poly rope that secures the main cover to the bottom rail of the frame assembly should be checked, and adjusted as needed. The tension on the main cover should be uniform from end and side to side. Rope ends must be tied off onto the frame members at the ends on each side.
- Cleaning - Cover and doors can be cleaned with a mixture of light detergent and water. A soft bristle brush with the mixture can be used to loosen any hard dirt, mould, or build up on the cover. After cleansing, the cover should be rinsed thoroughly to avoid any chemical reaction from residual detergent. Allowing dirt and debris to sit on cover over an extended time will damage cover irreparably.
- Severe Weather - in preparation for inclement weather, completely secure the door of your buildings portable building.

part Code	Descriptin	Quantity
1	Top roof truss	3
1A	Top roof truss for front and back panel	2
2	Upper roof truss	6
2A	Upper roof truss for front panel	2
2B	Upper roof truss for back panel	2
3	Lower roof truss	10
4	Shoulder truss	6
4A	Shoulder truss for front panel;	2
4B	Shoulder truss for back panel	2
5	Sidewall truss	6
5A	Sidewall truss for front and back panel	4
6L	Base plate for left corner	2
6R	Base plate for right corner	2
7	Base plate for sidewall	6
	Ratchet	10
9	Horizontal tube	44
9A	Brace tube	24
9B	Clip for #9A	48
10	Tensioning tube for roof cover	8+2
11	Hexagon bolt M16*40	170
12	Hexagon bolt M20*40	44
13	Carriage bolt M10*110	60
14	Hexagon bolt M10*30	50
15	Plastic cap	4
16	Roof cover	1
17	Rope for cover installation	8
18	Band for ratchet	10
19	Anti-wear sticker	40
20	PVC tube	18+2
21	Ratchet for PVC tube	48
22	Band for PVC tube	48



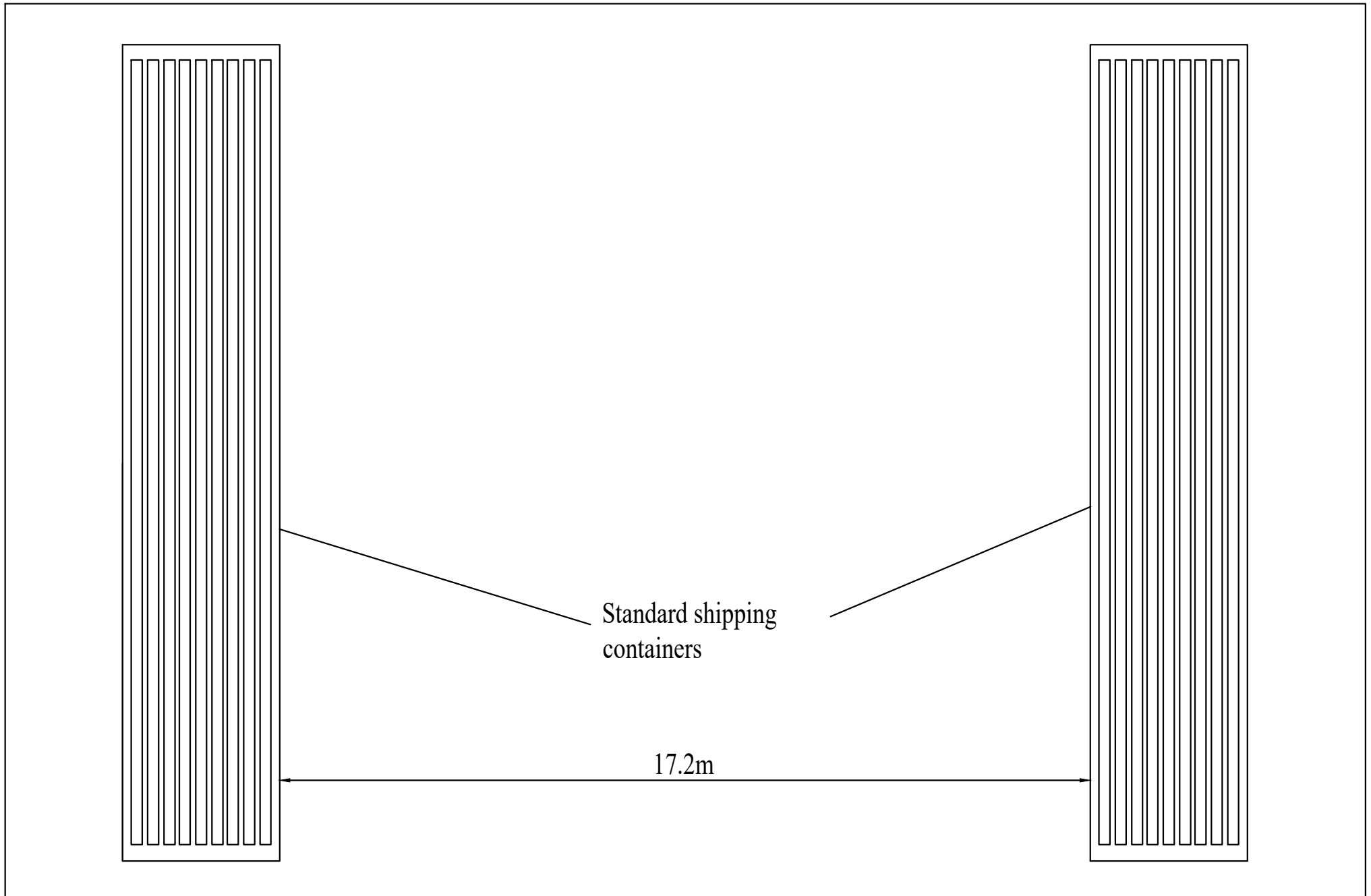
STEEL FRAME MATERIAL	Q235 HOT GALVANIZED STEEL TUBE	Kit Buildings	
FABRIC MATERIAL	PVC610GSM FABRIC		
FRAME	76*2MM ROUND TUBE	DESIGN	L.CHEN TRUSS
PURLIN	60*1.5MM ROUND TUBE	DRAWN	Q.LI
RAIL	60*1.5MM ROUND TUBE	CHECK	H.DING
		CLIENT	KIT BUILDINGS
		PROJECT	TENT



594020C W 18 * L 12 * H 6

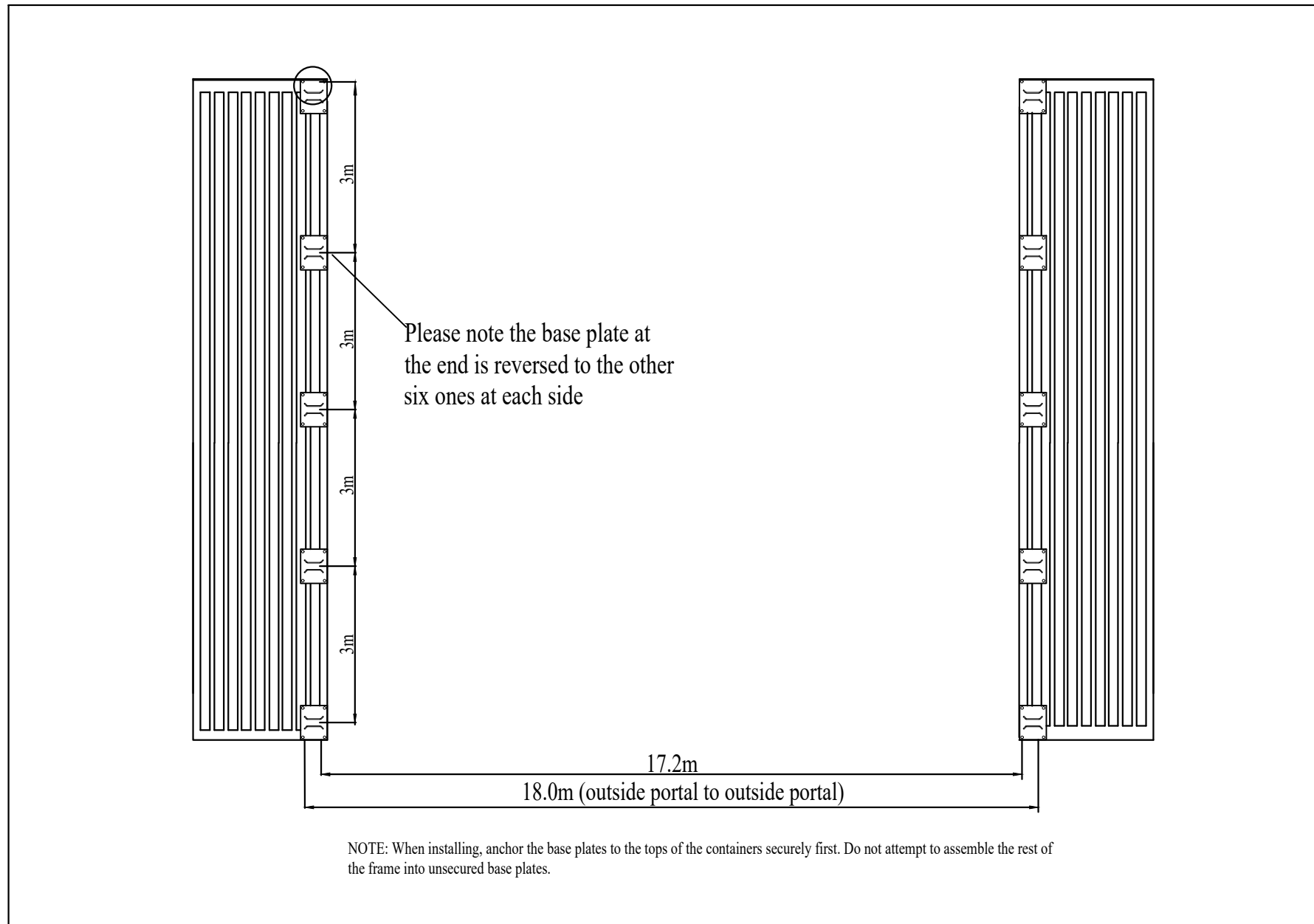
EP 1 - CONTAINER POSITIONING

1. Ensure the site is level and firm.
2. Place containers 17.2 meters apart.



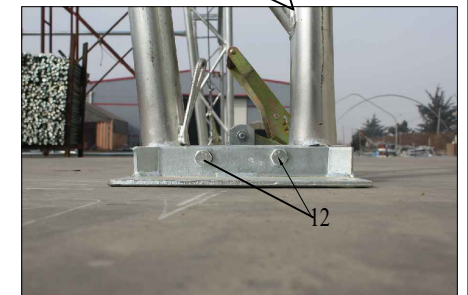
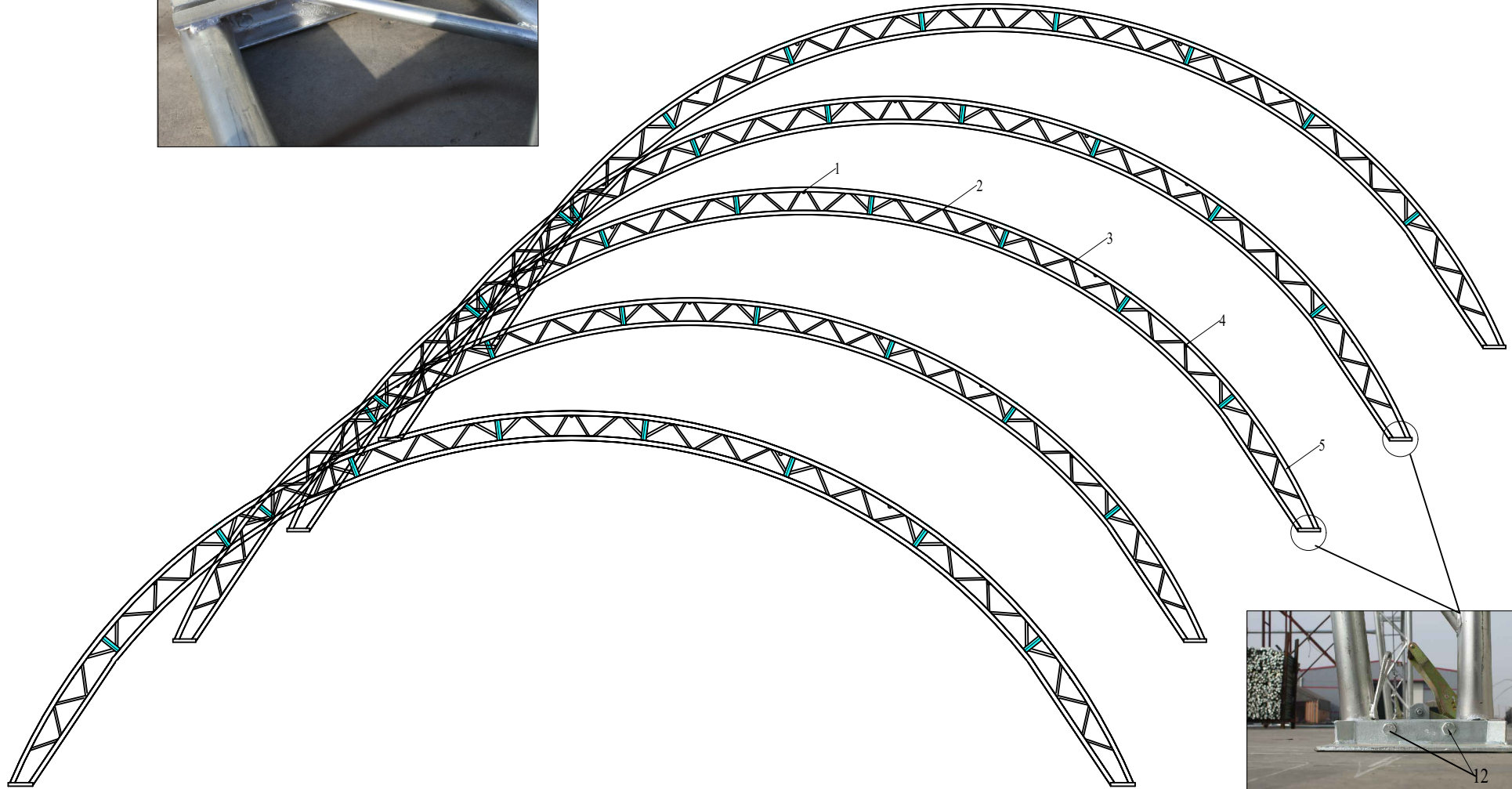
STEP 2 - BASE PLATE LAYOUT & SECURING

1. Secure base plates to the container tops, ensuring that the outside of outer portal to outside of outer portal measurement is 18m. The distance between every two adjoining spigots at each side is 3m.
2. Weld the Base Plates to the container tops (the welding can through the 4 holes on each base plate)



STEP 3 - FRAME ASSEMBLY

1. Assemble ALL portals on the ground first.
2. Assemble parts #1,1A,2,2A,2B,3,4, 4A,4B,5,5A and bolt portal legs together using part#11.



STEP -4 HORI ZONTALTUBE ASSEMBLY

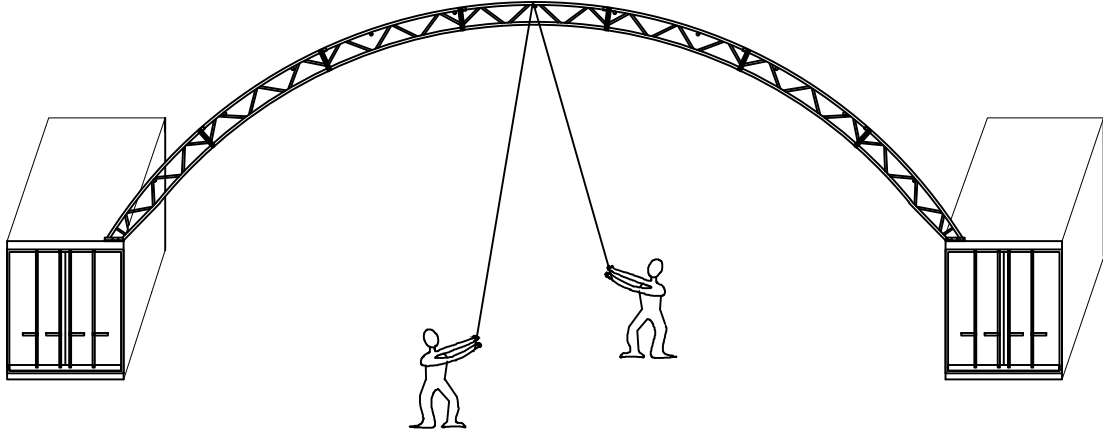
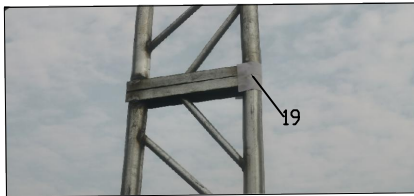


FIGURE 5 THE ROPE IS TO HOLD THE FRAME IN PLACE



APPLYING ANTI-WEAR PAD

INSTALLATION TIP: IT IS CRITICAL TO MONITOR AND MAINTAIN THE ANTI WEAR PADS OVERTIME AS IT IS MUCH MORE COST EFFECTIVE TO REPLACE ANTI WEAR PADS THAN AN ENTIRE TARP.

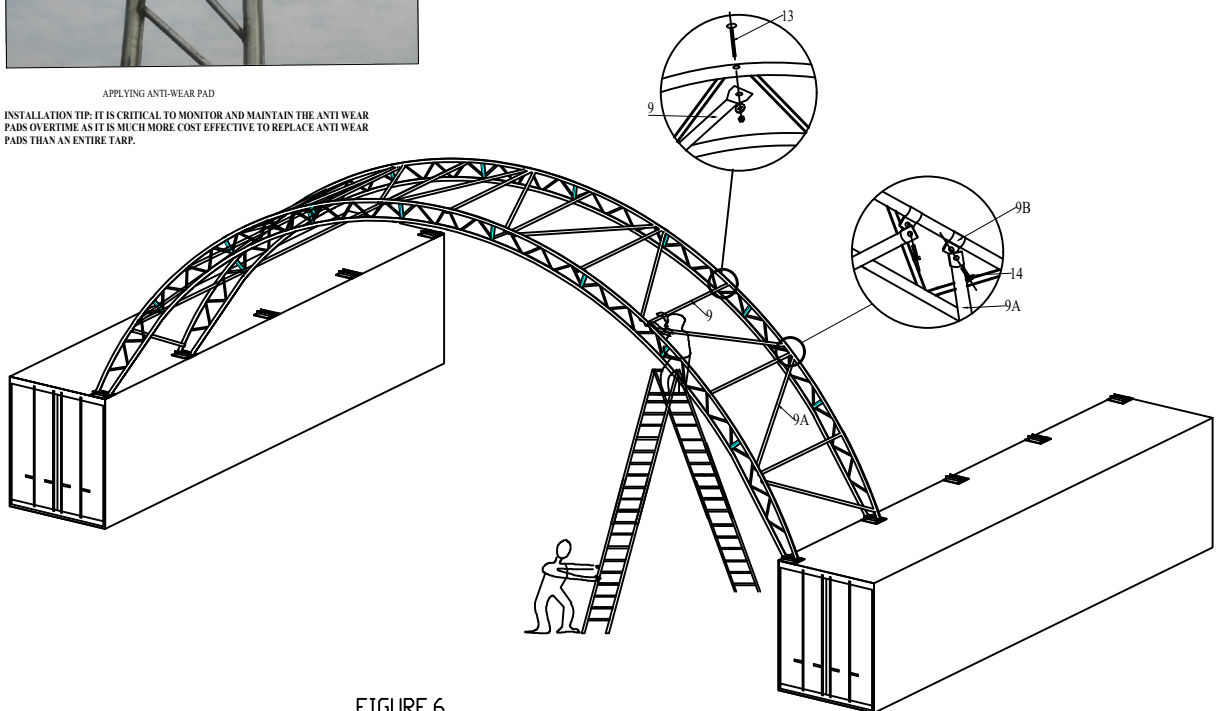
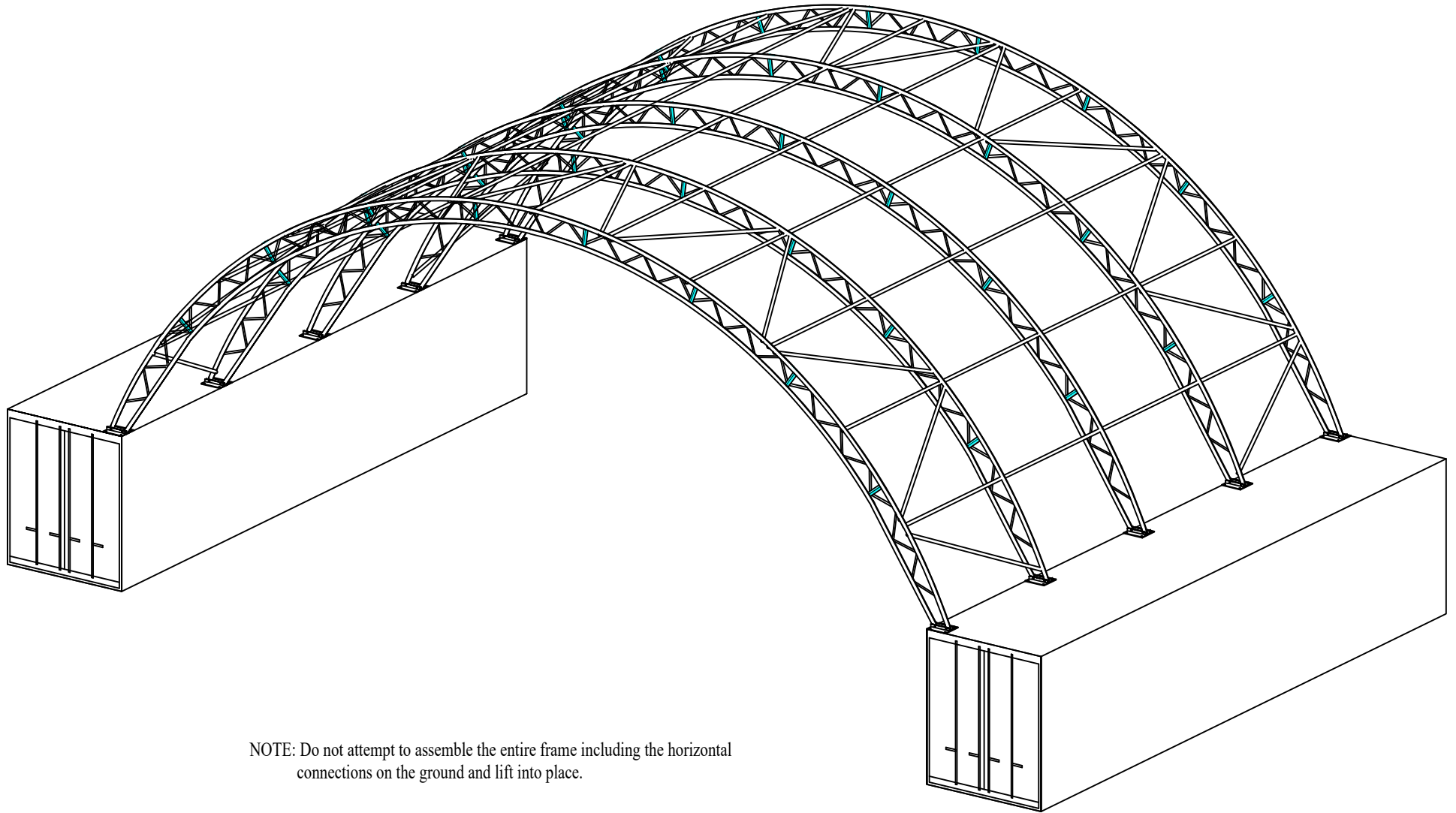


FIGURE.6

INSTALLATION TIP: THE FRONT AND BACK PANELS ARE NOT THE SAME AS INTERIOR PANELS. PLEASE DO NOT MIX THEM UP! YOU HAVE THE OPTION OF ADDING BRACE SUPPORT TUBE

STEP 5 - FRAME ASSEMBLY Continued



NOTE: Do not attempt to assemble the entire frame including the horizontal connections on the ground and lift into place.

STEP 6 - COVER INSTALLATION

1. Slide the cover over the frame from one side to the other, not end to end.
2. Tension the ends **FIRST** by pulling and tensioning the ends of the cover using the nylon webbing already threaded through the cover. Tension evenly at both ends and tie off securely.
3. Insert lower tensioning tube part #10 into the sleeves of the cover.
4. Push tube to very end of sleeve. Feed tube back into sleeve end(centre the tube in sleeve).
5. Insert nylon strap over tensioning tube. Feed ends into tie down ratchet. Do not fully tension. Please refer to details A,B,C,D.

Then make the cuts using forfex along the outlines.

a Before inserting the cover tensioning tube(part #10) into pocket of roof cover, you need to make cuts for band of Ratchet on the cover first. Firstly please draw the outline of the cuts according to the position of Ratchet. The position of cuts should be right upon the ratchets.
draw the outline of cuts

b

First circle the band for tie down ratchet(part#18) around the tensioning tube through the cuts on the pocket of the roof cover.

c

Then put the bands through the reel of the ratchet, and tension the band by ratchet.

d

10

18

NOTE: Ensure the cover is the right way around and have an even amount of cover overhanging at both ends of the frame. Sleeves are on the underside and are on the sides of the cover only. Then ends of the shelter has nylon tension webbing already threaded through as well as eyelets.

STEP 7 - COVER INSTALLATION Continued

1. Lace cover to end portals through eyelets then fully tension.
2. Fully tension tie down evenly on each side.
3. Tension the nylon rope again and tie them off to the 4 small flanges.
4. Double check all knots are secure and cover is well tensioned and stretched onto frame.

NOTE: The cover shall always been well tensioned! If there is any damage to the straps and ropes, they should be repaired/replaced ASAP, to prevent any further damage to cover

